

AgieCharmilles

CUT C 350

CUT C 600



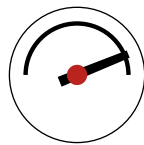
CUT C 350/600

The solution for standard parts

The CUT C series are designed to guarantee the best performance maintaining low running costs. The high cutting speed allows adapting to the biggest production volumes, while the AC CUT HMI 2 system ensures a perfect understanding and use of the expert modules.



CUT C series are easy:
save time and improve your operator's efficiency.



CUT C series are fast:
increase your productivity and reduce your cost per part.



Accelerate your return of investment by benefiting of low running costs.

AC CUT HMI 2

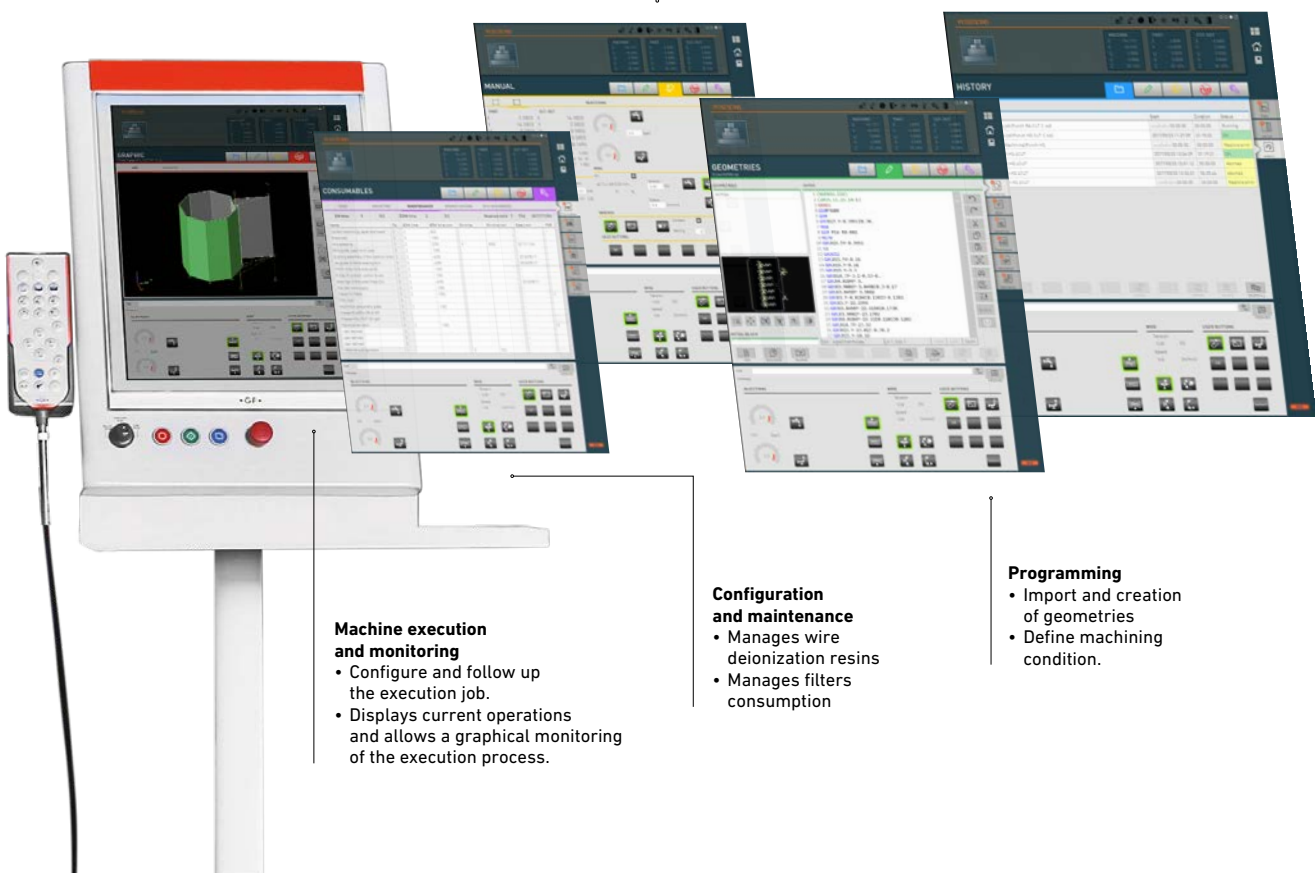
AC CUT Human Machine Interface enables increasing the productivity by providing efficient tools to assist the operator in the workshop.

Manual mode set up

- Access to main machine functions
- Perform manual measurements, and manual machining.

Files Management

- Organize the execution of a succession of jobs.
- Manage files and folders.
- Interact with preparation and execution modes.
- Get autonomy by access to AC CAM EASY programming system



Machine execution and monitoring

- Configure and follow up the execution job.
- Displays current operations and allows a graphical monitoring of the execution process.

Configuration and maintenance

- Manages wire deionization resins
- Manages filters consumption

Programming

- Import and creation of geometries
- Define machining condition.



Wire circuit

The wire spool storage has been designed to be easily accessible so that the operator can carry out a rapid change of spools.

The simplest, the best
Minimum components and consumable parts means low maintenance, reducing running costs.

Automatic threading and rethreading
For unattended running hours, the equipment includes automatic wire threading system (as standard).

Thermocut for all types of wire
Whether it's a hard or soft brass, coated or not, automatic threading is fast and reliable.

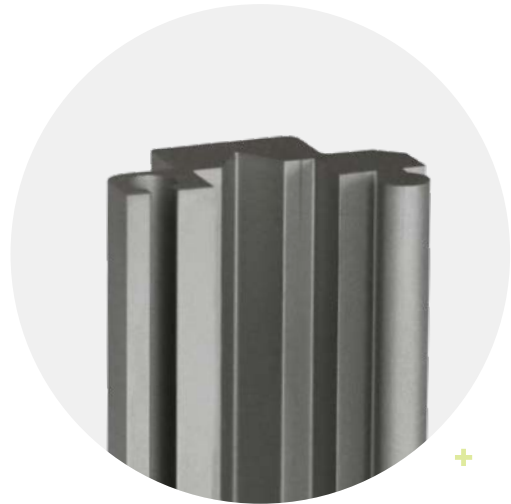
Digital Intelligent Power Generator (IPG)

This fully programmable power supply is equipped with a dedicated electronic circuit that includes the EDM know-how. Our Intelligent range of expert technologies help you to achieve the surface quality and precision the industry demands.

POWER-EXPERT
Wire breakage prevention on parts with variable heights. POWER-EXPERT select the optimal power to be used in the wire.

Corner strategy
Ensures accuracy of sharp angles and small radii. Adjust of machining parameters during changes of direction.

High cutting speed
Thanks to the cheap brass wires, extremely high removal rates are possible.



Technical data

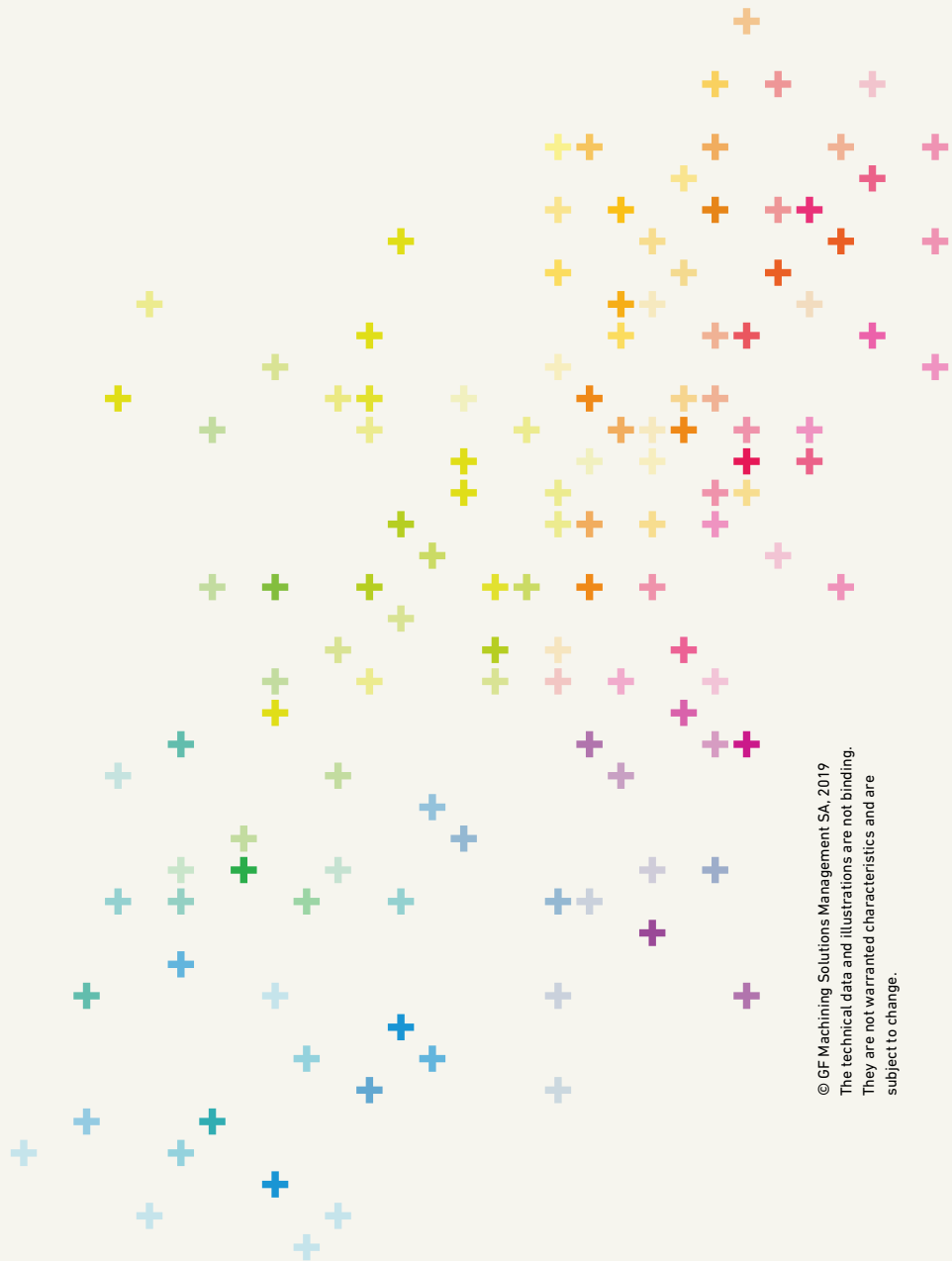
		CUT C 350	CUT C 600
Axis travel (X, Y, Z)	mm	350 x 250 x 250	600 x 400 x 350
Axis travel (U, V)	mm	± 45	± 50
Speed of axis movement	mm/min	0-3000	0-3000
Max. workpiece dimensions *	mm	820 x 680 x 250	1030 x 800 x 350
Max. workpiece weight	kg	400	1000
Max. taper angle / part thickness	° / mm	± 30°/50	± 30°/50
Wire diameters available	mm	0.15, 0.20, 0.25, 0.30	0.15, 0.20, 0.25, 0.30
Max. weight of wire spool	kg	8 (standard)	8 (standard)
Best surface finish Ra (carbide/steel)	µm	0.25/0.30	0.25/0.30
Anti-collision protection		Integrated in X, Y and Z axes	Integrated in X, Y and Z axes
Measuring system		Linear glass scales (XY) and encoder (UVZ)	Linear glass scales (XY) and encoder (UVZ)
CE kit		Standard	Standard

* Width x depth x height

At a glance

We enable our customers to run their businesses efficiently and effectively by offering innovative Milling, EDM, Laser, Additive Manufacturing, Spindle, Tooling and Automation solutions. A comprehensive package of Customer Services completes our proposition.

www.gfms.com



© GF Machining Solutions Management SA, 2019
The technical data and illustrations are not binding.
They are not warranted characteristics and are
subject to change.